

Weight management support With BENEО's versatile solutions

Managing body weight remains one of today's biggest health challenges

By 2030, about 3 billion (nearly 50 %) of the world's adult population are projected to be overweight or obese¹, increasing the need for effective dietary strategies that support a sustainable and healthy weight management.

Supporting healthier weight management with BENEО ingredients

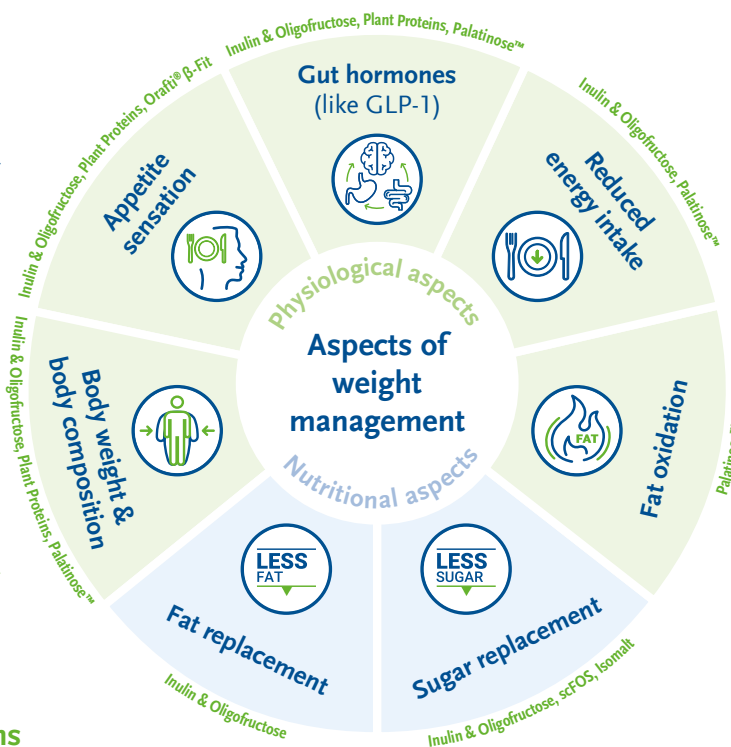
BENEО offers ingredients that:

- are naturally sourced and nutritious
- are suitable for diverse food and beverage applications
- complement GLP-1 journeys
- support healthier weight management through proven physiological & nutritional effects

Weight management means:

- losing excess body weight
- and/or maintaining a healthy body weight

The primary goal is the long-term maintenance of a healthy weight



BENEО's versatile weight management solutions with science-backed effects



Orafiti® Inulin & Oligofructose

- Prebiotic chicory root fibres
- Better appetite regulation
- Less energy intake
- Support weight & fat mass loss
- Less calories through sugar & fat replacement



Palatinose™

- Slow-release sugar derived from beet sugar
- Lower glycaemic & insulinaemic response
- Sustained GLP-1 stimulation
- Promotes fat oxidation
- Supports weight & fat mass loss



Orafiti® β-Fit

- Wholegrain barley flour
- High beta-glucan content
- Viscous fibre
- Better appetite regulation



Plant Proteins (such as BeneoPro or Remypro)

- Increased satiety after a high-protein meal
- As satiating as animal protein
- Supports muscle mass maintenance
- Stimulate the release of gut hormones



BENEО's scFOS

- Short-chain fructo-oligosaccharides derived from beet sugar
- Dietary fibre
- Less calories through sugar replacement



Isomalt

- Polyol derived from beet sugar
- Very low-glycaemic
- Less calories through sugar replacement

¹ World Obesity Atlas 2025. London: World Obesity Federation, 2025. <https://data.worldobesity.org/publications/?cat=23>; Overweight BMI >25 kg/m²

The information in this document is presented in good faith and believed to be correct, nevertheless no responsibility/warranties as to the completeness or accuracy of this information can be taken. This information is supplied upon the condition that the persons receiving the same will make their own determination as to its suitability for their purposes prior to use.



Scan here for more
BENEО-Institute insights